

77th Edition
September 2025



**VILLAGE
VOICES**

The title 'VILLAGE VOICES' is written in a large, black, serif font, slanted upwards from left to right. The word 'VILLAGE' is on the top line and 'VOICES' is on the bottom line. The text is surrounded by a trail of small yellow stars, with a larger, five-pointed yellow star at the end of the trail on both the top-left and bottom-right corners.

Distributed to residences in
Buckland, Charney Bassett, Gainfield,
Hinton Waldrist, Littleworth,
Longworth, Lyford and Pusey

REALLY USEFUL CONTACTS

GP Surgeries	The Whitehorse Medical Practice, Faringdon	01367 242388
	District Nurse or Health Visitor	01367 240087
	Botley Medical Practice	01865 248719
OUT OF HOURS DOCTOR & MENTAL HEALTH HELP LINE — 111		
Hospitals	Great Western Hospital, Swindon	01793 604020
	John Radcliffe, Oxford	01865 741166
	Abingdon Community Hospital	01865 904346
	Witney Community Hospital	01865 904222
	Witney Minor Injuries	01865 903841
ALWAYS RING 999 IN AN EMERGENCY		
Vets	Court Vets, Stanford in the Vale	01367 710595
	Elms Vets, Faringdon	01367 242416
Opticians	Haine & Smith, Faringdon	01367 242262
	David Spicer, Elms Parade, Botley	01865 241142
Chemists	Faringdon Pharmacy	01367 244632
	Wootton Pharmacy	01865 736136
	Lloyds Chemist, Botley	01865 247023
Injured Wildlife	St. Tiggywinkles	01844 292292
	Little Foxes	01844 279469
District Council	Vale of the White Horse	01235 422422
	Emergency Helpline	01235 422420
Gas Emergencies 24 hr		0800 111 999
Electrical Emergencies or Power Cuts 24hr		105
Thames Water Emergencies 24hr		0800 316 9800
Crimestoppers		0800 783 0137
Police – Non-Emergency - www.thamesvalley.police.uk		101
Citizens Advice - https://www.citizensadvice.org.uk		0300 330 9042
Women's Aid - nationaldahelpline.org.uk		0808 200 0247
Men's Advice Line		0808 801 0327
Samaritans – samaritans.org		116 123
Childline - childline.org.uk		0800 1111
Mind – mind.org.uk		0300 123 3393
Age UK – ageuk.org.uk		0800 169 6565
The Cedar Community Club — thecedarcommunityclub.com		01865 686472
La Leche League – laleche.org.uk		0345 120 2918

LOCAL	The Blue Boar, Longworth, OX13 5ET	01865 820494
	The Chequers Inn, Charney Bassett, OX12 0EX	01235 868642
	The Lamb Tavern, Buckland, SN7 8QN	01367 709196
PUBS	The Maybush, Newbridge, OX29 7QD	01865 300101
	The Trout Inn at Tadpole Bridge, SN7 8RF	01367 870382

SPECIAL EVENTS FOR SEPTEMBER

Sun, 7 th 2.00-5.00pm	Longworth Church Fete	Longworth Manor <i>(page 13)</i>
Sat, 13th	Ride + Stride	Sponsored Church Visits <i>(page 27)</i>
Sat, 13 th 10am-8pm & Sun, 14 th 11am-5pm	WWII 80th Anniversary Exhibition	Longworth Village Hall <i>(page 15)</i>
Sun, 14 th	Breast Walk Ever Oxfordshire	Wallingford, OX10 8EB <i>(page 26)</i>
Sun, 28 th 11am	Littleworth Harvest Festival	Holy Ascension Church, Littleworth <i>(page 11)</i>

SAVE THE DATE

Sat, 4th Oct 1-4.00pm	Charney Community Social Afternoon	Charney Bassett Village Green <i>(page 9)</i>
Sat, 8th Nov 6.30-8.30pm	Longworth Fireworks	White House, Church Lane, Longworth <i>(page 14)</i>
Sat, 22nd Nov	Roving Supper Party	Longworth <i>(page 14)</i>

VILLAGE VOICES COMMITTEE

Chair — Lesley Kinch villagevoices@yahoo.com 01865 820237
 Treasurer — Dee Tyrer villagevoices@yahoo.com
 Committee Member — Lesley Chaundy villagevoices@yahoo.com
 Editor — Karen Coleman villagevoicesmag@gmail.com
 Business Adverts — Nick Kane nick@kanes.org 07768 478668
 Distribution — Sophie Sheard sophiecsheard@gmail.com

Submission date for the October edition of **VILLAGE VOICES**
10th September
We cannot accept any late submissions, apologies for any inconvenience this may cause

Please send to
villagevoicesmag@gmail.com

Please be brief as space is limited and we like to include all articles and adverts that have been received by the deadline date. All published submissions will be attributed and we will not publish any anonymous or late submissions.

REGULAR EVENTS CALENDAR

Monday

9.15-10.15am	Fitsteps (Dance Fitness)	<i>Outside at Studland House, Buckland, SN7 8QL, Debs 07968 948007 www.workoutwonderful.com</i>
9.45-10.45am	Thrive Pilates	ZOOM — <i>pipa@thrive-pilates.co.uk</i>
1 st Mon of month 10.00-12.30pm	Community Library	Houlton Room St Mary's Church, Longworth <i>Lesley Kinch 01865 820237</i>
10.00-11.30am Term Time	Baby & Toddler Group	Longworth Village Hall <i>emily_wells100@hotmail.com</i>
10.30-11.30am <i>excl Bank Holidays</i>	Walk Talk Walk Accessible Community Walk for All	Meet at White Horse Medical Practice Volunteer Way, Faringdon <i>Catherine 07917 804537</i>
5.00—6.00pm	Pilates High Intensity Power (HIP) beginners	ZOOM — <i>sally@pilateswithsally.co.uk</i>
5.30—6.30pm	Musical Stretch Joyful Movement & Simple Stretches	ZOOM — <i>Debs 07968 948007 www.workoutwonderful.com</i>
6.10-7.10pm	High Intensity Power (HIP) Pilates	ZOOM — <i>sally@pilateswithsally.co.uk</i>
7.00—8.30pm <i>excl Bank Holidays</i>	Iyengar Yoga	Longworth Village Hall <i>lorraine-moore@outlook.com</i>
7.30pm—8.30pm	Fitsteps/Dance Party Strictly fun in the sunset or dark with glow sticks	<i>Outside at Studland House, Buckland, SN7 8QL, Debs 07968 948007 www.workoutwonderful.com</i>

Tuesday am

9.15-10.15am	Thrive Pilates	Longworth Village Hall, <i>Pippa Carey 07941 260427 pippa@thrive-pilates.co.uk</i>
9.30—3.00pm	Cedar Community Club	Village Hall, Hinton Waldrist <i>Clare Stroudley 01865 686472 thecedarcommunityclub@gmail.com</i>
10.00-11.00am	Pilates Standing/Seated	ZOOM — <i>sally@pilateswithsally.co.uk</i>
11.30-12.30pm	Pilates Mixed Ability Matwork	Charney Bassett Village Hall <i>sally@pilateswithsally.co.uk</i>
11.45-1.15pm	Iyengar Yoga	Longworth Village Hall <i>lorraine-moore@outlook.com</i>

Please send amendments to villagevoicesmag@gmail.com

REGULAR EVENTS CALENDAR

Tuesday pm

5.45-6.45pm	Thrive Pilates Emphasis on back/neck care & mobility	Longworth Village Hall, <i>Pippa Carey</i> 07941 260427 <i>pippa@thrive-pilates.co.uk</i>
7.30-9.00pm	Bellringing	Hinton Church Tom — <i>hintonwaldristbells@gmail.com</i>
8.00-9.30pm	Vale Islanders	Charney Bassett Village Hall <i>annie@thehilltribe.com</i>

Wednesday

9.15-10.15am	Fitsteps (Dance Fitness) Coffee & Teas afterwards	Buckland Memorial Hall <i>Debs 07968 948007</i> <i>www.workoutwonderful.com</i>
9.30-10.30am	Keep Fit	Longworth Village Hall
9.30-3.00pm	Cedar Community Club	Village Hall, Hinton Waldrist <i>Clare Stroudley 01865 686472</i> <i>thecedarcommunityclub@gmail.com</i>
10.15-11.00am	Daisy Cake Café	Buckland Memorial Hall <i>Debs 07968 948007</i>
3 rd Weds of month <i>NOT JULY & AUG</i>	Longworth Coffee Morning	Blue Boar Pub, Longworth, <i>run by</i> <i>Longworth Village Hall Committee</i>
3 rd Weds of month 12.30pm	The Buckland Kitchen	Buckland Memorial Hall <i>tiggy@thewildmanfamily.co.uk</i>
4.00—4.30pm	Little Ninjas Karate (Soo Bahk Do) for 3-6 yrs	Longworth Village Hall <i>Sabrina — hello@dojangx.com</i>
4.35-5.25pm	Karate (Soo Bahk Do) Kids Only, (6-12 yrs)	Longworth Village Hall <i>Sabrina — hello@dojangx.com</i>
5.30-6.30pm	Karate (Soo Bahk Do) (6+, teens, adults)	Longworth Village Hall <i>Sabrina — hello@dojangx.com</i>
7.15-8.15pm	Circuits	Longworth Village Hall (not teacher led)

Thursday am

9.15-10.15am	Thrive Pilates	Longworth Village Hall, <i>Pippa Carey</i> 07941 260427 <i>pippa@thrive-pilates.co.uk</i>
9.30-11.00am <i>Term Time</i>	Buckland Baby & Toddler Group	Buckland Memorial Hall <i>Jade Gilbert 07496 134139</i>
10.00-12.00	Craft, Sew and Social	Charney Basset Village Hall <i>julieingramjohnson@me.com 01235 868961</i>
10.30-11.15am	Zumba Gold	Longworth Village Hall <i>eugenieZumba@outlook.com</i>

Regular Events Continued on next page

REGULAR EVENTS CALENDAR

Thursday pm

2 nd Thurs of month 2.30pm	U3A	Faringdon Corn Exchange <i>www.faringdon.u3asite.uk</i>
5.30-6.30pm	Mixed Ability Matwork Pilates	Charney Bassett Village Hall <i>sally@pilateswithsally.co.uk</i>
6.30-7.30pm	Thrive Pilates	Longworth Village Hall, <i>Pippa Carey</i> <i>07941 260427 pippa@thrive-pilates.co.uk</i>
6.35-7.35pm	Pilates	Charney Bassett Village Hall <i>sally@pilateswithsally.co.uk</i>
8.00—9.00pm	Dance Party <i>In the dark with glow sticks</i>	Outside at Studland House, Buckland <i>SN7 8QL. Debs 07968 948007</i> <i>www.workoutwonderful.com</i>
1 st Thurs of month 7.00pm	Buckland W.I.	Buckland Memorial Hall
2 nd Thurs of Month 7.15 for 7.30pm	Charity Quiz Night <i>(diff charity each month)</i>	Blue Boar, Longworth, <i>01865 820494</i> <i>blueboarmanager@yahoo.com</i>
3 rd Thurs of Month 7.15 for 7.30pm	Longworth & District History Society	Southmoor Village <i>prwoodward@btinternet.com,</i> <i>fletchers10@hotmail.com</i>

Friday

8.45-9.30am	Musical Stretch	Longworth Village Hall <i>Debs 07968 948007</i> <i>www.workoutwonderful.com</i>
9.45-10.45am	Fitsteps	Longworth Village Hall <i>Debs 07968 948007</i> <i>www.workoutwonderful.com</i>
1 st Fri of Month 3.00-4.30pm	First Friday Coffee, Cake & Chat	Charney Basset Village Hall <i>Not January</i>
1 st Fri of Month 7.00 for 7.30pm	Longworth Film Club NOT JULY & AUG	Longworth Village Hall <i>longworthfilmclub@hotmail.com</i>
2 nd Fri of month 10.30am-12pm	Village Coffee House	Buckland Memorial Hall <i>Liz Jepson 01367 705005</i>

Saturday

9.00am	Longworth Runners	Meet outside Longworth Village Hall <i>Richard Kenyon 07831 569940</i>
--------	-------------------	---

Sunday

4 th Sun of month 10.00-11.30am	Café@Church	St Mary's Church, Longworth
---	-------------	-----------------------------

**Highly recommend you check with the organisers that these sessions are running as Village Voices cannot be held responsible for any last minute changes.
Please send amendments to villagevoices@gmail.com**

BUCKLAND

PARISH COUNCIL

Bampton Road — Please take care when leaving the village at the Bampton turn as through traffic approaches the junction at speed.

A420 — People are still turning right into and out of the village — **DO NOT DO IT.**

Overhanging Bushes — There are still places in the village where bushes and shrubs are overhanging boundary walls making it difficult for pedestrians to walk safely. Please remember that if shrubs or bushes are on your property it is your responsibility to keep them trimmed back from public footpaths and roads.

Next Parish Council Meeting — Monday 29th September at 7.30 pm held in Buckland Village Hall. Residents of the parish are very welcome to attend to listen to the proceedings.

Parish Council— John Connolly (Chairman), Mark Jepson (Vice Chairman), Fiona Bartholomew, Alex Wildman, Mark Skipworth, Neil Brown.

Contact — David Page (clerk) e-mail clerk@bucklandparishcouncil.gov.uk



The Buckland WI

Meet every 1st Thursday in
The Buckland Memorial Hall

7.00pm - Guest Speakers
Tea, Coffee & Refreshments

**We also meet for Walks,
Coffee, Lunch & Outings**

New members always
welcome!

Call or email Julie Skipworth,
07796 958401
j.a.skipworth@gmail.com

THE BUCKLAND KITCHEN



Please join us on
Wednesday, 17th September

Buckland Memorial Hall

12.30pm

Delicious home-cooked two course meal

Tea and coffee

£7.50 per person

For info tiggy@thewildmanfamily.co.uk
claire@audleyhouse.com

BUCKLAND'S COMMUNITY LED PLAN

Last month we said we would tell you about ideas for the Community Led Plan. Here are some examples of what Buckland villagers have said they would like to see:-

Community spaces for all age groups to enjoy: for village fetes, children's play, an area for dogs to run, places for people to meet and talk, an outdoor gym.

Awareness, care and use of community assets: better care of the spaces we have, community awareness of ways that the character of Buckland can be preserved, a well-researched conservation area appraisal, bringing the old swimming pool area into use as a community asset. More use of the church as a community facility. Community support for a thriving pub in Buckland. Community support for a thriving school.

Valuing access to the countryside: well-kept footpaths, access to the other side of the Thames over 10 ft bridge. Good relationships with local landowners.

Safer roads: safer access to the A420 from the village. Central delivery point for deliveries to the village. Pavements which are good for walkers and for wheelchair users.

Awareness of our natural surroundings and of neighbouring protected areas: protection of wild animals from harm: nesting birds, deer. Tree planting, a community orchard, increase green areas and support re-wilding.

More social activities: an annual village fete, village activities for older people, for children and young people.

Ways in which we can help one another: transport sharing scheme, more use of the village minibus by the community, a volunteer car scheme, a shared electric vehicle for use by villagers. Volunteer hub. Skill swap.

Doing our bit for the environment: support and advice for transition to renewable energy, a community composting scheme, making our sewage disposal more environmentally friendly. EV charging point at the village hall powered by solar.

Communication: easily accessible web-based information about the village and what's on.

It is possible that the field behind Buckland Village Hall could be leased for community use and the steering group is exploring the implications of this proposal.

If there is a particular idea that you are keen on and that you think could be developed into a feasible objective for the Community Led Plan, please get in touch. We will put you in touch with others and advise you about how your idea could be taken forward.

Contact any member of the CLP steering group:
Mannnie Barber, Jim Douglas, Nesta Pugh, Mike Sheil, Louise Wellesley
Or phone/message 07876 563856. Email: clpbuckland@gmail.com

CHARNEY BASSETT

PARISH COUNCIL

Agenda and minutes of meetings can be found online at charneybassett.org.uk including the full draft minutes of the 9th July meeting.

The next Parish Council meeting is due to be held at the village hall on Wednesday 10th September at 7.30pm

Trevor Brown (Parish Clerk) can be contacted at parishclerk@charneybassett.org.uk.

Parish councillors' information can be found at www.charneybassett.org.uk/council-parish/parish-council/

Saturday 4th October
1 to 4pm

On the
Village Green



HARVEST THEMED GET TOGETHER

Scarecrow Competition and Trail
Homemade Pies and Tarts Contest

Grand Draw Fancy Dress

Hot Food ~ Teas, Coffees and Cake

Harvest Races and Other Games and Activities

Produce Stall . . . and more!

See September's Charney Chatter for more information or contact Eve (868710) or Lucy (868782)

CHARNEY BASSETT & LYFORD EDUCATIONAL TRUST (CLET)

APPLICATIONS WELCOME

CLET invites applications for grants from, or on behalf of children and young adults aged from 0 to 25 yrs resident in **Charney Bassett** or **Lyford**, for broadly educational (not recreational) purposes.

Full or partial grants are awarded by Trustees towards the cost of educational activities, books or equipment.

Applications can be submitted at any time and will be considered by the Trustees at meetings in January, May and September.

Please do contact Ruth Clements on cletclerk@gmail.com or on 07765 695937 for more details or with any queries.

If in doubt, please reach out and talk to us.

First Friday CCC

3.00 – 4.30 pm

In Charney Bassett Village
Hall

On the first Friday of each
month

All welcome



HINTON WALDRIST

PARISH COUNCIL

26 Eaton Village, Eaton, Oxfordshire OX13 5PR
Clerk: Allison Leigh

parishclerk@hintonwaldrist-pc.gov.uk, tel: 07900 998926

Hinton Waldrist Parish Council has a vacancy for its Parish Clerk. If you are interested, please email parishclerk@hintonwaldrist-pc.gov.uk.

The next meeting of the Parish Council will be held on Thursday the 4th September at 7pm in the Village Hall.

100 Club Winners for August
1st — Mark Couves, 2nd — Melvyn Smith

LITTLEWORTH

PARISH MEETING

Chairman: Tony Woodward

Clerk: Adrian Picket — clerkpmlittleworth@gmail.com

100 Club Winners for August
1st — David Phillips, 2nd — Jacintha Godden



LITTLEWORTH HARVEST FESTIVAL and BACK TO CHURCH SERVICE Followed by HARVEST LUNCH

**On: Sunday 28th September at 11am
In Littleworth Church**

**This event is open to anyone who loves or
has a connection with Littleworth**

**Lunch: £5 To book your place, please contact
Jill Woodward by Sept. 21st**

Tel: 07413 345788 or woodwardjill02@hotmail.com

**Lunch will be followed by an Auction of the Harvest
Produce. Donations will be in aid of the Church**



LONGWORTH



Next meeting — The next meeting will be on 3rd September 2025 at 7pm in the Village Hall. Please feel free to attend and contribute your ideas and suggestions for Longworth. The agenda will be available on the website and noticeboard shortly before the meeting.

New Parish Councillor – At its July meeting, the Parish Council co-opted Craig Taylor to the Council. Please join us in welcoming Craig to the Council!

For information regarding the Parish Council, please visit www.longworth-pc.gov.uk

For other village news and social information see: <https://longworthvillage.promotemyplace.com/>



QUIZ NIGHT

7.15pm for 7.30pm

Tickets are £3 per person
Book in advance at
The Blue Boar, Longworth
Call Anthony at the pub on
01865 820494, or
email: blueboarlongworth@yahoo.com

2025 dates
11th September, 9th October, 13th November, 11th December
Each month the proceeds will go to a different local charity.

LONGWORTH CHURCH FETE

* RAFFLE – MANY PRIZES TO BE WON!*

Tickets for the raffle are available at £1.00 in books of five, which you can buy **now** on longworth-fete.square.site use this URL or scan the QR code

A list of all the prizes can also be found on this site
Alternatively, you can call in if you are passing, or buy some on the day at the fete

Thanks very much for your support!

Jonny Newell (raffle organiser),
The Forge, Tucks Lane, Longworth



LONGWORTH CHURCH FETE

SAVE THE DATE



LONGWORTH CHURCH FETE

SUNDAY 7TH SEPTEMBER
2PM - 5PM
LONGWORTH MANOR

★ Bouncy Castle ★ Tug-of-war
★ Dog Show ★ Human Fruit
Machine ★

★ Cake Stall ★ White Elephant
★ Tombola ★ Raffle ★

★ Bar ★ Tea & cakes ★ Local
produce ★ Music & more ★

'PRODUCE'
PLEASE



**FOR THE VILLAGE FETE
SUNDAY 7TH SEPTEMBER**

**Vegetables, fruit, eggs, plants,
chutney, jams**

**If you can spare some, we
would greatly appreciate your
products.**

Lyn Eagle 821315

Jane Phillips 820251

White Elephant Stall

Clear out the clutter! We are now collecting for the White Elephant stall at Longworth Fete - any saleable things in reasonable condition (but not books) - good quality clothes/ household/toys/garage/ garden/ bric-a-brac.



Can you help?

We prefer to collect!

Unsold items go to a local charity

Please contact:

John or Val Burbank on
01865 820847 / text 07810010489
or Kirsty Dunbar on 07876 071229

**THE LONGWORTH CHURCH
FETE NEEDS VOLUNTEERS TO**

HELP WITH:-

RUNNING THE FETE

RAFFLE

STALLS

SETTING UP

CLEARING AWAY

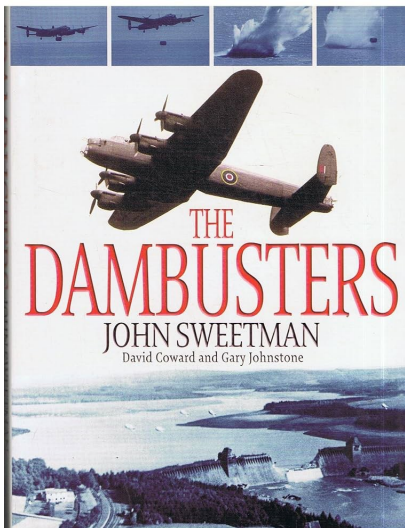
**PLEASE CONTACT TRUDY ON
07815 856502**

LONGWORTH



LONGWORTH FILM CLUB

In support of Longworth's WWII Exhibition we are showing



Starring **Michael Todd**
and **Michael Redgrave**

Friday 5 September 2025

Longworth Village Hall
doors open at 7.00pm for screening at
7.30pm

Entry £6.00

longworthfilmclub@hotmail.com

LONGWORTH BONFIRE & FIREWORKS



Saturday NOV 8th
6.30 – 8.30pm

**White House, Church Lane,
Longworth**

OX13 5DX – Free Parking

Hog Roast, Hot Dogs,
'The Oxford Cow' Ice Cream
Licensed Bar & Hot Drinks

ENTRANCE: £10 ADULT, £5 CHILD
(UNDER 15),

£25 FAMILY (2 ADULTS + UP TO 3
KIDS), KIDS UNDER 5 FREE

DINNER IS SERVED



Save The Date !!!

*Roving
Supper
Party*

*Saturday
22nd Nov 2025*

To secure your place & for more info contact:
Gill Collier 07947 027597 or
Sue Sandbach 07879 415021



LONGWORTH 1945

**MEMORIES FROM LONGWORTH RESIDENTS
PAST AND PRESENT**

**Saturday 13th
September
10am to 8pm
(Bar and refreshments
6pm-8pm)**


**Sunday 14th
September
11am to 5pm**

A free event capturing stories of local residents and their families throughout World War II, to mark the 80th anniversary of the end of the War.

There will be talks on both days (details to follow) and displays of war time items. Everyone welcome!



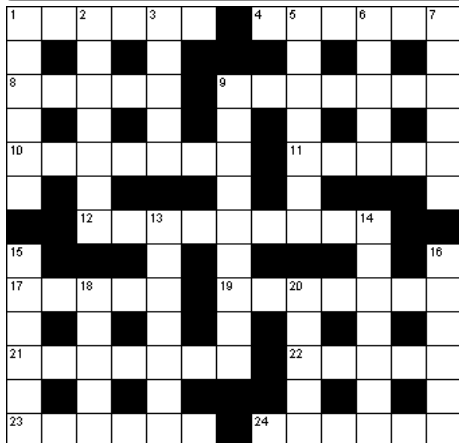
**LONGWORTH
VILLAGE
HALL**



**Come and help us
make Longworth's
"wall of poppies"**

**Email valeryrose235@gmail.com or
yvonne.f.longstaff@gmail.com for more information**

COFFEE TIME



Across

- 1 Evening meal (6)
- 4 Brought about (6)
- 8 Wept (5)
- 9 Lake District county (7)
- 10 Without affectation (7)
- 11 Scoundrel (5)
- 12 Dutch port (9)
- 17 Happen again (5)
- 19 Bear of the Rocky Mountains (7)
- 21 Wordy (7)
- 22 Alluring woman (5)
- 23 Lamb joint (6)
- 24 Go away (6)

Down

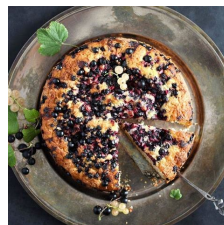
- 1 Small unit of time (6)
- 2 Protein (anag) (7)
- 3 Duck from which down is obtained (5)
- 5 Held in high regard (7)
- 6 Gesture of doubt or indifference (5)
- 7 More expensive (6)
- 9 Workmate (9)
- 13 Commotion (7)
- 14 Polish national dance (7)
- 15 Native American warriors (6)
- 16 Young swan (6)
- 18 Healed (5)
- 20 Offspring (5)

Solution found on page 26
Copyright © 2025 Simply Daily Puzzles

BLACKCURRANT & ALMOND CAKE

Serves 6 - 8

- 200g butter
- 200g sugar
- 200g ground almonds
- 3 eggs
- 1tsp vanilla extract
- 200g blackcurrants (fresh or frozen)



Grease a 23cm loose-bottomed flan tin and line it with a circle of greaseproof paper

- * In a processor cream the butter and sugar till pale
- * Add the eggs and ground almonds alternately - then the vanilla extract
- * Tip into the prepared tin and scatter over the blackcurrants
- * Bake for 35 minutes on 180°C until golden brown and leave in tin to cool
- * Sprinkle with icing sugar and serve as a dessert or with a cup of tea

GRAPE EXPECTATION WITH TED SANDBACH



When most people think of Spanish wine, they picture rich, oak-matured reds from Rioja or Ribera del Duero. But head northwest, to Galicia's green and windswept Atlantic coast, and you'll find Rías Baixas – a region that produces some of Europe's most refreshing white wines.

The vast majority of wines in Rias Baixas are made from Albariño. With its thick skins and naturally high acidity, it thrives in the cool, damp climate, where sea breezes sweep in from the rugged inlets (or *rías*) that give the region its name. While Albariño is the star of the region, you'll also find tiny quantities of other local varieties like Loureiro and Treixadura, sometimes blended for extra aromatics and texture.

The climate of Rias Baixas is perfect for producing bright, zesty wines brimming with citrus, peach and green apple aromas – often with a touch of salinity, as though someone has rinsed the glass in seawater before pouring. This salty quality, allied to high, refreshing acidity, makes Albariño from Rias Baixas a wonderful aperitif - and even better when paired with seafood dishes. Either way, it's a fridge-door staple



Asorei Albariño, Rias Baixas - The Oxford Wine Company, £16.50—A vibrant, refreshing profile with flavours of citrus, green apple, and subtle floral notes, complemented by a touch of minerality, making it the perfect choice for those who love crisp, aromatic white wines.

Palacio de Fefiñanes Albariño, Rias Baixas - Waitrose, £22 - Albariño in all its splendour. A crisp, refreshing wine with fabulous apple and peach aromas and a long, elegant finish.

Terras de Compostela Albariño, Rias Baixas - Eynsham Cellars, £19.99 - This elegant Albariño has the typical minerality one would expect alongside delicate stone fruit and citrus notes. The finish is clean, crisp, and dry with lovely texture courtesy of ageing on fine lees.



Ted is a resident of Longworth and Owner of The Oxford Wine Company

REPORT FROM COUNCILLOR LEE EVANS

September 2025

Most of us use the A420 every day. It's the essential road that links our communities together. So as your County Councillor, improving safety on the A420 is a top priority for me – and here's some of the things I've been doing to make that happen.

Starting with the roundabout at Kingston Bagpuize, Council data shows this is a hotspot for road traffic incidents. I've asked Council officers to look at the recurring causes of incidents so that we can identify ways to make this roundabout safer – whether by reviewing speed limits and/or re-designing lanes.

Moving down the A420, in my view the Pinewoods Road and Charney Road junctions are among the most dangerous on the entire A420. I've discussed them several times with senior Council officers and I am pleased to say we now have a plan to make the junctions safer. What we're proposing is to extend the 50mph zone so it includes both junctions, meaning you will no longer have to turn into 70mph traffic when joining the A420. There will also be dedicated lanes for turning right off the A420 from either direction. There would still be more than a mile of 70mph road for overtaking – but not at the junctions.

Some residents have asked me why I am not proposing a roundabout. I've raised the question of a roundabout and I am told it would cost several million pounds and the County Council would be very unlikely to fund it. The money would have to come from major nearby development, like turning local fields into a new housing estate. And even then, a roundabout wouldn't be guaranteed – and if it did happen, it could take many years. Therefore, I am proposing that we go with the plan that is on the table, that the County Council will fund with its existing budget, and that can be achieved within the next year without the need for further development.

Further down the A420, I've begun discussions in County Hall about the junctions at Buckland and Littleworth. It's become clear to me that I'm not going to be able to find easy solutions at either junction, unfortunately. But I am currently exploring all options for re-designing the road and looking at where the money to pay for that could come from. I'll keep in touch with residents on my progress.

I hope this above update is informative and provides welcome news on the Charney Road and Pinewoods Road junctions. If you have any views on the above, or if there is anything I can do to help you in your area, please contact me on 07724 601 096, lee.evans@oxfordshire.gov.uk or at [facebook.com/ LeeEvansOxfordshire](https://www.facebook.com/LeeEvansOxfordshire).



GARDENING

It is predicted 30 degrees today and I am cooking beetroot, but they need to be picked, if they get any bigger I won't find a saucepan big enough to put them in! The french beans are cropping well and I am filling the freezer with produce. I only have 2 courgette plants which I look at most days but some courgettes still grow to marrow size, it seems overnight! I have found gardening this year "interesting" with heatwaves, keeping plants watered and now a hosepipe ban. Many plants are flowering earlier than usual and so far I only have 6 luffas, way fewer than last year. My everlasting sweet peas looked a picture this year but their flowering was short lived and they soon set seeds. On the plus side my cacti have never looked so good and this summer some have flowered that have never flowered before. Even though the flowers are short lived, one cactus opening in the evening and wilting by the morning but filling the conservatory with a beautiful fragrance.

Spring/summer flowering cacti need only minimum watering from now on and cool night temperatures of 8—10 C to encourage a period of rest which mimicks their natural cycle. Allow the compost to dry out before watering but give enough water to prevent the cacti from shrivelling.

Bring in any houseplants that you put outside for the summer, clean their leaves to remove dust and check for any aphids. This month reduce the water that you give them and place them so they have enough light for the impending shorter days.

September is the time to plant garlic, spring cabbage, spinach, cauliflower and salad leaves eg. mizuna, rocket and mustard greens. Herbs are always useful so try growing them on a kitchen window-sill for a fresh supply through the winter.

There are still many vegetables to pick and enjoy or store in a cool, dry place for later. Gluts can be frozen, dried or made into jam or chutneys.

Hippeastrum (amaryllis) bulbs and prepared hyacinths need to be planted in pots this month so they will be flowering for Christmas.

September is an excellent time to plant and move any shrubs. The soil is still relatively warm allowing them to establish a good root system to promote strong growth in the spring.

If you have a pond remove any dead leaves and plants in and around the pond to avoid decomposing vegetation building up.

Enjoy your gardening.



The Friendly Gardener

LONGWORTH AND DISTRICT HISTORY SOCIETY

Our September meeting sees Marie-Louise Kerr giving her talk "Oxford in Canvas". Marie-Louise's background is in Ancient History and as a museum curator. She is now Curator at West Berkshire Museum and loves to share stories about the artefacts in her care. Date of the meeting is Thursday 18th September, 7.15pm, in Southmoor Village Hall. The bar will be open, and there will be books to browse, borrow or buy. All welcome. Members free and visitors £4.

Pam Woodward



The Benefice of Cherbury with Gainfield

a community working to express Christ's love for all

THE BENEFICE MINISTRY TEAM	
Rector The Reverend Talisker MacLeod	The Vicarage, Buckland, SN7 8QN 07887 773579 talisker@alathea.org.uk
Associate Priest The Reverend Dr. Sebastian Mattapally (Father Sebastian)	The Rectory, Church Lane, Longworth, OX13 5DX 01865 821025, 07949 168729 samattapally@gmail.com
Permission to Officiate The Reverend Jim Mynors	4 Malthouse Paddock, Buckland SN7 8RH 07546 279939 jim@mynors.me.uk
Lay Worship Leader Lucy Gildersleeves Lay Minister Avril Coleman	01235 868782 gildersleeveslucy@gmail.com admin@cherbury-gainfield.org.uk
Benefice Office: Jane Hawes Tuesday & Thursday - 10.00am – 12.30pm	07597 903813 admin@cherbury-gainfield.org.uk

CHURCH WARDENS		
Buckland St Mary The Virgin	Mrs Catherine Duff	Little Ragnell, Faringdon, SN7 8JP 07917 804537 catherine@littleragnell.com
	Mr Kester Rose	16 Summerside, Buckland, SN7 8QP 07340 816156 kester.rose@gmail.com
Charney Bassett St Peter	Mr Iain McGregor	Northmead, Buckland Road, OX12 0ES 01235 868738 / 07526 700541 charneychurchwarden@gmail.com
Hinton Waldrist St Margaret of Antioch	Dr Diane Clarke	01865 821765 / 07850 602394 churchwarden@st.margarets-hinton.org.uk
Littleworth Holy Ascension	Mrs Jill Woodward	Cornerstone, 07413 345788 woodwardjill02@hotmail.com
	Mrs Alice Margey	Manor Farm Chase, 01367 243387 alice@manorfarmchase.com
Longworth St Mary	Mr Fabian French	01865 820286 / 07771 945014 fabian@haughhouse.co.uk
Lyford St Mary	Mr Chris Villiers	Pond House, 01235 868920 christophervilliers@yahoo.co.uk
Pusey All Saints	Mr James Simpson	Pusey House, 07785 973386 simp.james@gmail.com

HINTON WALDRIST & LONGWORTH WALK

2 Churches and the River Thames – about 5 miles

SN7 8SA O S Grid Ref 365 991

From the front of the church – St Margaret of Antioch at Hinton Waldrist, walk eastwards along the lane towards Longworth, where the lane goes to the right, go ahead onto the footpath past Longworth Manor and exit through the Manor gates. St Mary's Church, Longworth, is just to the left.



Church of St Margaret of Antioch
Hinton Waldrist



St Mary's Church
Longworth

Follow the lane until it bends to the right and at this point follow the footpath through the wooden gate (on your left) and go past the allotments. At the end of the allotments go through the gate and along the field edge, noting the wonderful view to Harrowdown Hill and over the Thames & Windrush Valleys,

continue until the path meets Tucks Lane.

Turning right onto the lane will take you past the Blue Boar Inn and onto Longworth's village square. Turn left and go down the hill until the end of the lane. Turn left and then first right (just before the entrance into Tucksmead). The footpath takes you up and over Harrowdown Hill, continue down the hill, follow the hedge along the next field, through the copse until you meet the Thames path at the river. Turn left and follow the path upstream beside the Thames to the weir by Shifford Lock. Keep on the path to the left and continue past Duxford Ford until the path meets the lane, turn left and pass the farm and continue down the lane back to Hinton Waldrist.



Harrowdown Hill



Shifford Lock



River Thames near Shifford Lock

CHARLIE MAYNARD MP

I hope you enjoyed a nice break over the summer! Thank you, as ever, for taking the time to read about what I've been working on in Witney and Westminster over the last few weeks. A really fun part of this job is being invited along to all the lovely events happening across the constituency which celebrate our community. The work which goes into organising them is so impressive!

Back in July, I joined the Carterton Armed Forces Festival which showcases the long-standing connection between the town and the Armed Forces community. Alongside an impressive display of military vehicles and equipment, there was lots of fun for children and families during the day. I also had a great time judging the Witney Carnival Parade. The effort everyone had put into their floats and costumes was fantastic!

I welcomed Lib Dem Leader Sir Ed Davey MP to Witney last month, where he launched a call for the Government to follow five key principles to transform support for young people with SEND (*Special Educational Needs and Disabilities*) – including increasing funding for local authority SEND provision and boosting capacity within both specialist and mainstream schools.

At the start of August, I was also really pleased to meet with the new Oxford Growth Commission and talk to them about why I think rebuilding the railway line linking Carterton, Witney and Oxford is crucial if we are going to stop gridlock on our local roads getting even worse in the next decade.

Parliament is currently in recess for summer, but in the last few weeks in Westminster before the House rose, I had the opportunity to challenge Ministers on the atrocities being committed in Gaza and the fact that they still have not stopped the export of F35 components which are manufactured in the UK and used in Israel. There is no question in my mind that we need to end all weapons exports to Israel, now!

Through the Business and Trade Select Committee, I had the chance to raise the concerns that have been highlighted to me by small businesses in Witney, about the move to quarterly financial reporting, which will add a big extra admin burden to them.

I also got the chance to challenge Ofwat's leadership on the failure to get to grips with Thames Water. Taking Thames Water into Special Administration is the only way to get the company out from under the mountain of debt it is in, so it can invest in the things that matter – providing a good service to our homes and cleaning up our rivers.

There was also a lot of debate on the Government's Welfare Bill before the summer recess. I could not support this Bill and voted against the Government's plan to cut Personal Independence Payments. This Bill will take away support from thousands of unpaid carers, leave some of the most vulnerable without support and increase pressure on our NHS and social care services.

This summer I also passed my one-year anniversary since being elected as your local MP. I've spent a lot of time reflecting on what an honour that is – as well as thinking ahead to everything I want to achieve in the next year.

There is still so much I want to do for our community, from cleaning up our beautiful rivers which have been badly polluted, to finding a sustainable transport solution to congestion on our roads, getting more support for children with SEND, and bringing more healthcare provision into our community.

Please do get in touch at charlie.maynard.mp@parliament.uk, if there is ever anything you want to raise, or that you need my help with.

August 2025

SEPTEMBER TIP - GO ORGANIC FOR PEOPLE & PLANET

Each month Katie, founder of Tribe Zero-Waste, a refill shop and home delivery service based in Faringdon marketplace, shares her tips for reducing waste and minimising your impact on the planet.



It's Organic September, a month dedicated to raising awareness of the many benefits of organic food and farming. If you're looking to use your buying power to help our planet, then choosing organic products is a brilliant way to do this – which is exactly why we prioritise selling organic products in our Faringdon Refill Shop.

Organic farmers use fewer pesticides and rely on whole ecosystems to keep pests under control. This might be by creating wildflower margins, digging ponds or planting trees. This means we're consuming fewer chemicals in our food, and our wildlife benefits too. Studies show that organic farms have 30% more biodiversity on average thanks to using fewer pesticides than conventional farming.

Organic farms also have healthier soils that are kept naturally fertile through natural compost, nitrogen-fixing crops and crop rotation. Long-term studies show that soils on organic farms store more carbon than conventional systems.

There are great benefits for people too! Organic products contain fewer artificial pesticides, additives and preservatives, no GM ingredients, and are produced using fewer antibiotics. You're also less likely to consume ultra-processed foods.

It may not be realistic to swap all your shopping to organic, but simple swaps like buying organic milk or eggs can make a real difference. This month's the perfect time to give them a try!

U3A FARINGDON & DISTRICT



Faringdon u3a welcomes everyone to enjoy social activities with people of a common interest. There are 40+ special interest groups including Art, French, Gardening, Wine Appreciation, Military History, Social History Walks, Current Affairs, Ashmolean Tours, Ukulele, Guitar, French, Spanish, Lunch Club plus many others. We now have some 470 members from all walks of life.

Our branch meets every **second** Thursday of each month at the **Faringdon Corn Exchange at 2.30pm**, with a guest speaker and refreshments afterwards. **Please** come and hear the speaker and discuss any groups you may be interested in joining.

Our next meeting is Thursday 11 September, at 2.30pm. Hilary Coombes, a successful author, having written eight+ books will be talking about her publishing career. She splits her time between Spain and Oxfordshire.

NOT TO BE MISSED – ALL WELCOME.

Enquires: Carol Jones, 07955 443 529, membershipsecretary@faringdonu3a.org.uk or www.faringdon.u3asite.uk

HOW TO SPOT A GOOD SOLAR INSTALLER (AND WHAT TO WATCH OUT FOR)

Thinking of going solar? You're not alone. With rising energy costs and more people keen to live greener, interest in solar panels has soared. But as demand has grown, so too has the number of installers—some excellent, others... less so.

Choosing the right installer can make all the difference. Not just in how well your system works, but in how smooth and stress-free the whole process feels. So how can you tell who to trust?

1. **Look for MCS certification** — MCS is the official quality mark for solar in the UK. Without it, you won't be eligible for the Smart Export Guarantee (SEG), which pays you for surplus energy sent back to the grid. If an installer isn't MCS certified, that's a red flag.
2. **Ask for a clear, written quote** — Good installers are transparent. They'll give you a fixed quote in writing, with everything clearly laid out. Be wary of vague estimates or pressure to sign quickly. A proper quote should feel calm, clear, and fair.
3. **Understand the warranties** — Your panels should come with a 25-year performance warranty, and your inverter with 5–10 years. But the real question is: what happens if something goes wrong? A reliable installer will explain who to contact and how support works.
4. **Check for tailored advice — not one-size-fits-all** — No two homes are the same. Roof type, shading, orientation, and usage all vary—especially in villages and rural areas. A good installer will take the time to model your specific setup and needs.
5. **Is an in-person visit needed?** - Sometimes yes, sometimes no. For many homes, digital tools and satellite imagery are more than enough for an accurate design. But if your roof layout is unusual or access is tricky, a site visit is a smart move. A good installer will explain why.
6. **Look at reviews and past installs** — Real-world experience matters. Read independent reviews, and ask to see examples—ideally homes like yours. Happy customers and local projects are always a good sign.

At *MakeMyHouseGreen*, we've worked on everything from barn conversions to slate-roofed cottages. Our ability to tailor a system to each home is one of our real strengths.

With the right installer, going solar can be simple, smart and satisfying. And a little homework now means peace of mind (and lower bills) for years to come.

Llewellyn Kinch, *MakeMyHouseGreen*, Longworth
Email: llewellyn@makemyhousegreen.com
Website: www.makemyhousegreen.com



RIPE+STRIDE

This annual sponsored event is taking place on
SATURDAY 13th September 2025

How many historic Oxfordshire churches can you visit on foot, horseback or cycle in a day? Many of the churches and chapels in Oxfordshire will be open for you to explore.

This is a great day out for all the family and a way to raise money for your local church and Oxfordshire Historic Churches Trust. Plan your own route and visit the churches of your choice.

For more details and to register visit

www.ohct.org.uk/ride-stride



LONGWORTH VILLAGE COFFEE MORNING



At The Blue Boar



17th September, 10.30am — Midday

Run by the Longworth Village Hall Management Committee



LONGWORTH LIBRARY



Held in the
Houlton Rooms
St. Mary's Church,
Longworth

First Monday of the month,
next one **1st September**
10.00am-12.30pm

Pop in for a chat over
coffee/tea & biscuits

**Books & Jigsaw
Puzzles free to
borrow**

Membership free to
Benefice residents

Contact
Lesley Kinch-820237
Karen Coleman-821795

COMMUNITY

THE CEDAR COMMUNITY CLUB

telephone 01865 686472
thecedarcommunityclub@gmail.com

Please contact our Manager,
 Clare Stroudley



HOW SAFE IS YOUR ELECTRIC BLANKET?

FREE ELECTRIC BLANKET CHECKS IN OXFORDSHIRE
 Make sure your blanket is safe to use this winter.

JOIN US and bring a friend for free refreshments and information about keeping safe and well.

SEPTEMBER 2025

Monday 22nd Rosehill, Oxford
 Tuesday 23rd Henley on Thames
 Wednesday 24th Bicester
 Thursday 25th Chipping Norton
 Friday 26th Abingdon

OCTOBER 2025

Monday 6th Risinghurst, Oxford
 Tuesday 7th Didcot
 Wednesday 8th Banbury
 Thursday 9th Witney
 Friday 10th Wantage



Limited collections from your house for those who are unable to get to us. Please tell them when you make your booking that you need a collection.

BOOKING INFORMATION. To book your safety check appointment Call: 01865 519800 Option 4 or Email: duty.officer@oxfordshire.gov.uk.
 Online Booking: <https://service.oxfordshire.gov.uk/blankettesting>
 (Pre-booked appointments only on a strictly first come first served basis)



CAFÉ@CHURCH

next one - Sunday, 28th September

10-11.30am — ish

St Mary's Church, Longworth

Join us at the Church Café

We will be here to welcome you all morning.

Please join us!

Accessible Community Walk

Friendly, accessible to all (incl wheelchairs & mobility scooters) community walk every Monday (excluding Bank Holidays) from White Horse Medical Practice, Volunteer Way, Faringdon at 10.30am.

Walks usually take about an hour. Refreshments in the garden afterwards.

More information:
 Catherine 07917 804537

